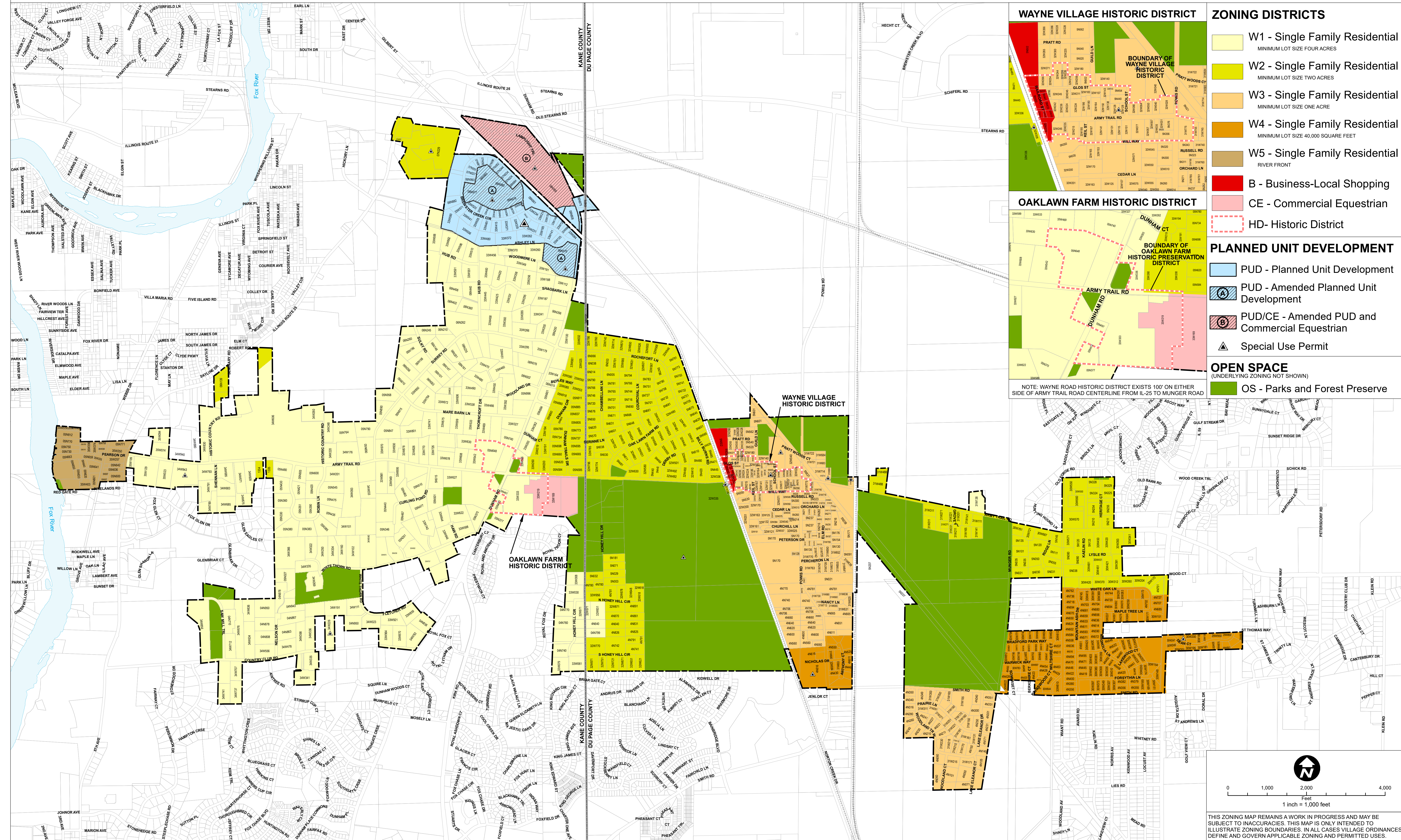




VILLAGE OF WAYNE ILLINOIS

ZONING DISTRICT MAP 2024

ADOPTED BY THE BOARD OF TRUSTEES MARCH 5, 2024 - ORDINANCE #ORD. 24-01.



WAYNE VILLAGE HISTORIC DISTRICT

OAKLAWN FARM HISTORIC DISTRICT

BOUNDARY OF WAYNE VILLAGE HISTORIC DISTRICT

BOUNDARY OF OAKLAWN FARM HISTORIC PRESERVATION DISTRICT

NOTE: WAYNE ROAD HISTORIC DISTRICT EXISTS 100' ON EITHER SIDE OF ARMY TRAIL ROAD CENTERLINE FROM IL-25 TO MUNGER ROAD

ZONING DISTRICTS

- W1 - Single Family Residential
MINIMUM LOT SIZE FOUR ACRES
- W2 - Single Family Residential
MINIMUM LOT SIZE TWO ACRES
- W3 - Single Family Residential
MINIMUM LOT SIZE ONE ACRE
- W4 - Single Family Residential
MINIMUM LOT SIZE 40,000 SQUARE FEET
- W5 - Single Family Residential
RIVER FRONT
- B - Business-Local Shopping
- CE - Commercial Equestrian
- HD- Historic District

PLANNED UNIT DEVELOPMENT

- PUD - Planned Unit Development
- PUD - Amended Planned Unit Development
- PUD/CE - Amended PUD and Commercial Equestrian
- Special Use Permit

OPEN SPACE
(UNDERLYING ZONING NOT SHOWN)

- OS - Parks and Forest Preserve

0 1,000 2,000 4,000
Feet
1 inch = 1,000 feet

THIS ZONING MAP REMAINS A WORK IN PROGRESS AND MAY BE SUBJECT TO INACCURACIES. THIS MAP IS ONLY INTENDED TO ILLUSTRATE ZONING BOUNDARIES. IN ALL CASES VILLAGE ORDINANCES DEFINE AND GOVERN APPLICABLE ZONING AND PERMITTED USES.